

Agenda for School Presentations

CUSD School Board Meeting May 9, 2012



1. Chico Unified School District Student Performance Assessment (SPA)

- What is it?
- District data
- District Grade Level Staff Development
- How are teachers and staffs using the data?



2. School Intervention Efforts: What's happening at each school to meet student achievement needs?

- Emma Elementary School
- Little Chico Creek Elementary School
- Marigold Elementary School
- Neal Dow Elementary School
- Shasta Elementary School
- Hooker Oak and Sierra View will not be sharing as they presented to the board individually in February 2012 regarding their schools.



CUSD Student Performance Assessment End of Year Data Spring 2012

English Language Arts

Grade 2 ELA

629 of 696 had an improvement in scores (90.4%)

40.1% improved their score by 25 percentage points or higher.

3.3% had a drop in their score by 10 percentage points or higher.

Grade 3 ELA

664 of 734 had an improvement in scores (90.5%)

22.2% improved their score by 25 percentage points or higher.

2.0% had a drop in their score by 10 percentage points or higher.

Grade 4 ELA

577 of 673 had an improvement in scores (85.7%)

8.6% improved their score by 25 percentage points or higher.

2.8% had a drop in their score by 10 percentage points or higher.

Grade 5 ELA

603 of 735 had an improvement in scores (82.0%)

6.8% improved their score by 25 percentage points or higher.

3.3% had a drop in their score by 10 percentage points or higher.

Grade 6 ELA

535 of 700 had an improvement in scores (76.4%)

2.9% improved their score by 25 percentage points or higher.

6.0% had a drop in their score by 10 percentage points or higher.

Mathematics

Grade 2 Math

673 of 711 had an improvement in scores (94.7%)

43.5% improved their score by 25 percentage points or higher.

2.1% had a drop in their score by 10 percentage points or higher.

Grade 3 Math

716 of 747 had an improvement in scores (90.5%)

41.6% improved their score by 25 percentage points or higher.

0.5% had a drop in their score by 10 percentage points or higher.

Grade 4 Math

618 of 684 had an improvement in scores (90.4%)

34.6% improved their score by 25 percentage points or higher.

2.0% had a drop in their score by 10 percentage points or higher.

Grade 5 Math

729 of 780 had an improvement in scores (93.5%)

34.9% improved their score by 25 percentage points or higher.

1.2% had a drop in their score by 10 percentage points or higher.

Grade 6 Math

590 of 712 had an improvement in scores (82.9%)

13.2% improved their score by 25 percentage points or higher.

3.8% had a drop in their score by 10 percentage points or higher.

Academic Performance Index (API)

	Base API	Growth API	Change
Chico Unified	789	803	14
Emma Wilson	792	796	4
Hooker Oak	786	800	14
Little Chico Creek	797	796	-1
Marigold	843	830	-13
Neal Dow	781	827	46
Shasta	848	851	3
Sierra View	868	872	4

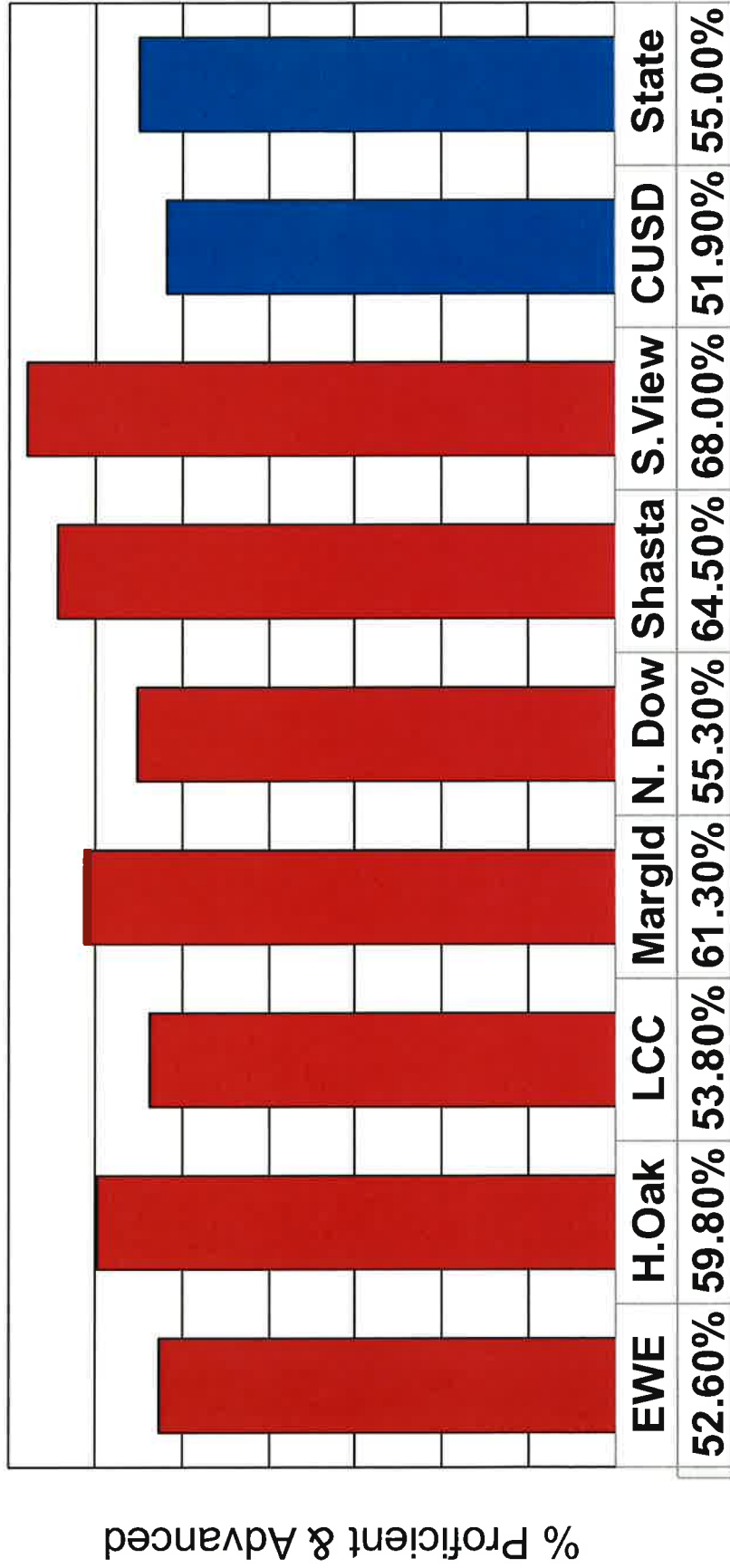
API Rankings (statewide)

	2005	2006	2007	2008	2009	2010
EWE	7	6	6	6	6	5
Hooker Oak	7	8	6	7	7	5
LCC	7	7	7	7	7	5
Marigold	8	8	8	8	7	7
Neal Dow	7	6	6	7	6	4
Shasta	9	9	9	9	9	8
Sierra View	9	8	8	8	8	8

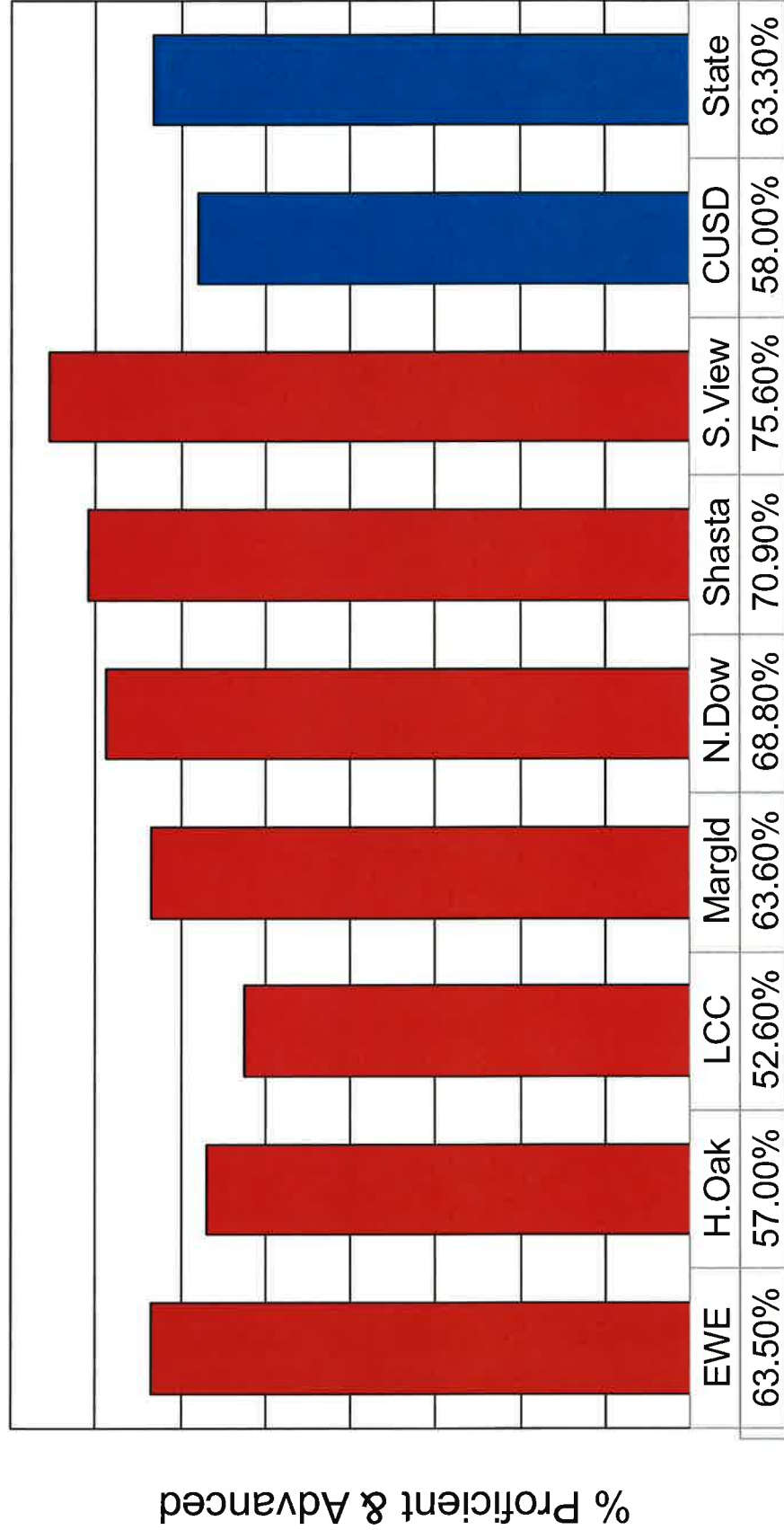
API Rankings (similar schools)

	2005	2006	2007	2008	2009	2010
EWE	1	1	2	1	2	1
Hooker Oak	1	3	1	2	1	1
LCC	4	4	8	5	5	2
Marigold	1	1	2	1	1	1
Neal Dow	2	1	1	3	3	1
Shasta	6	7	6	6	4	2
Sierra View	2	3	1	4	5	5

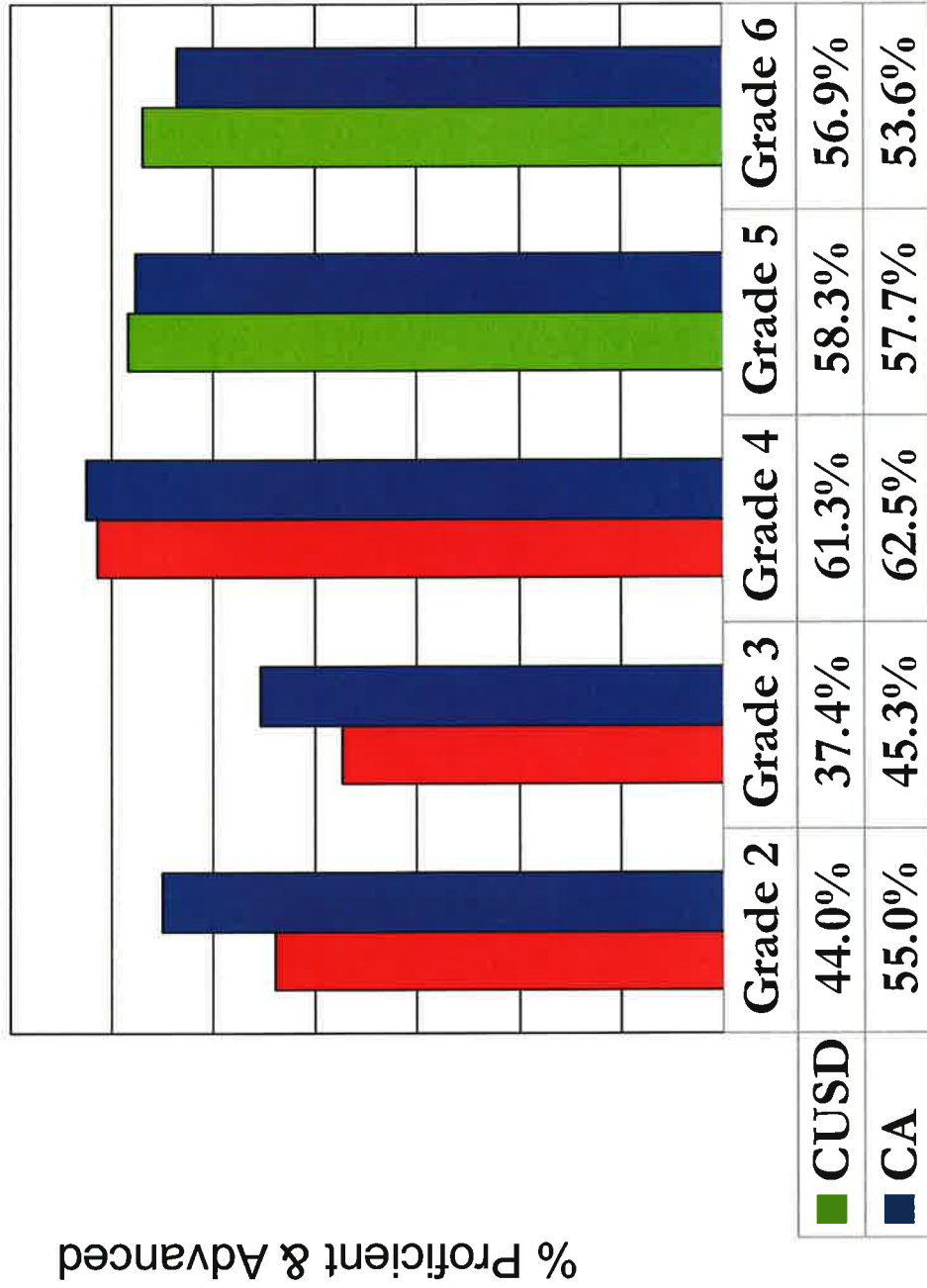
ELA 10-11 CUSD Schools vs. State



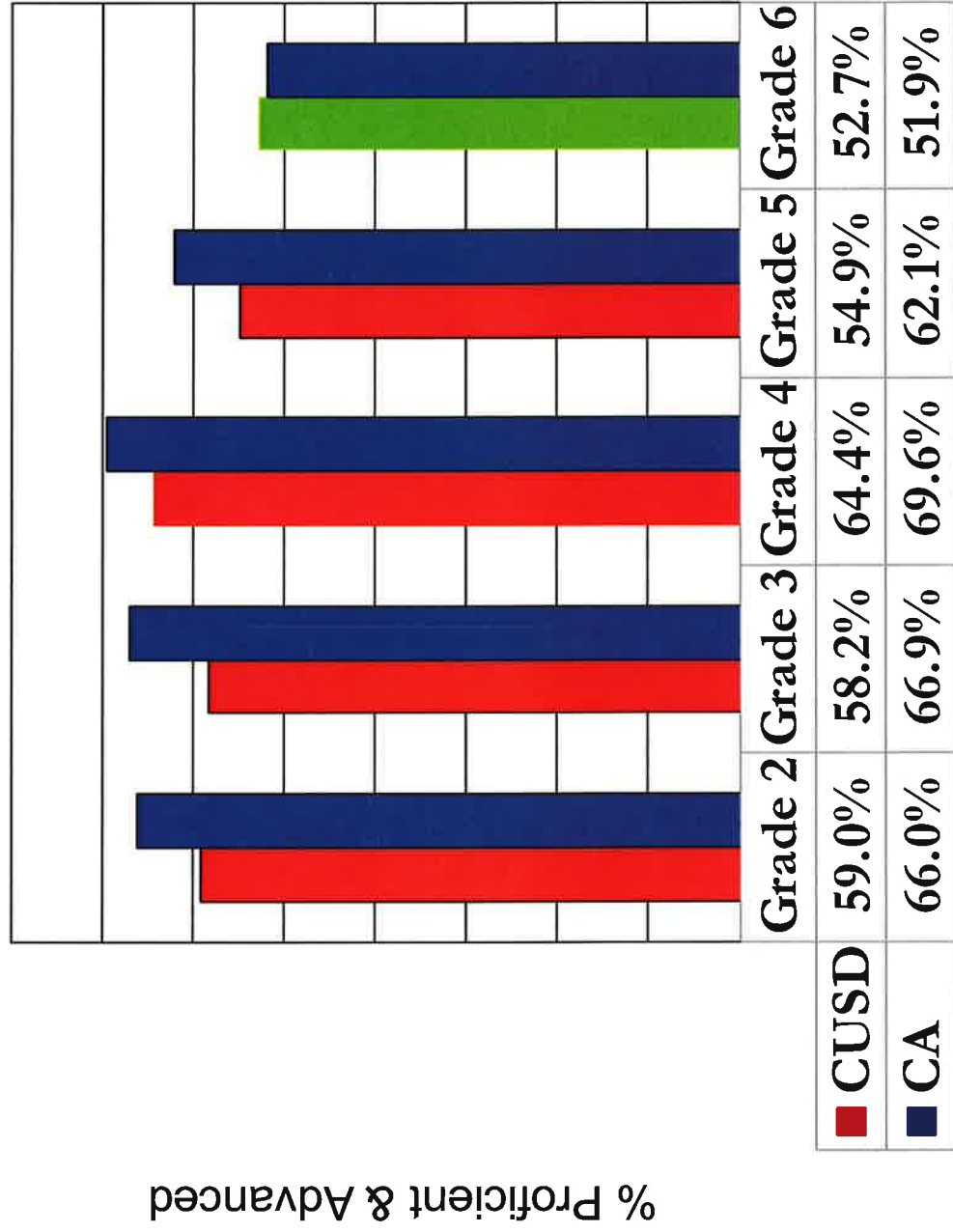
Math 10-11 CUSD Schools vs. State



ELA 10-11 CUSD vs. State by Grade Level

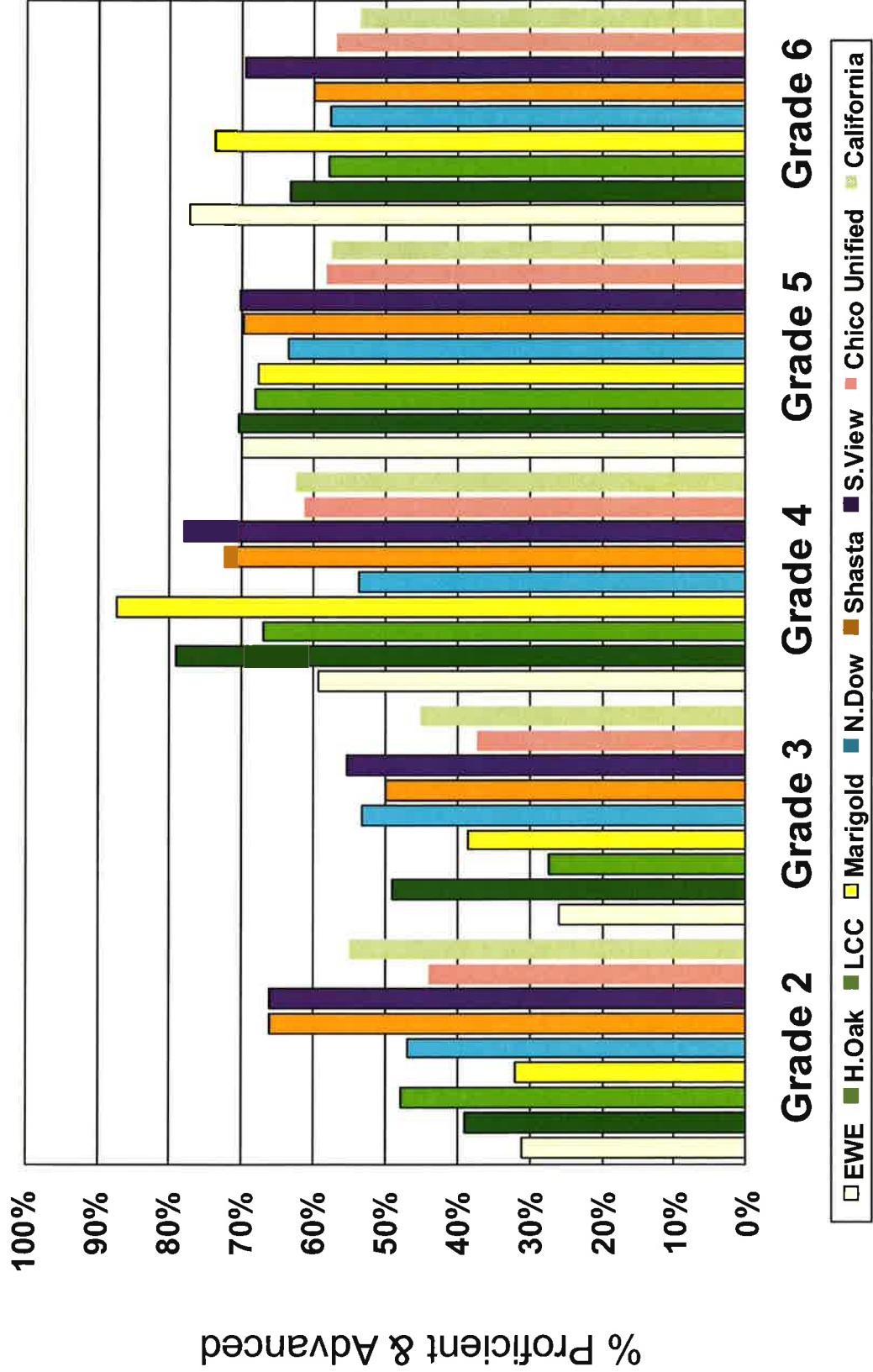


Math 10-11 CUSD vs. State by Grade Level

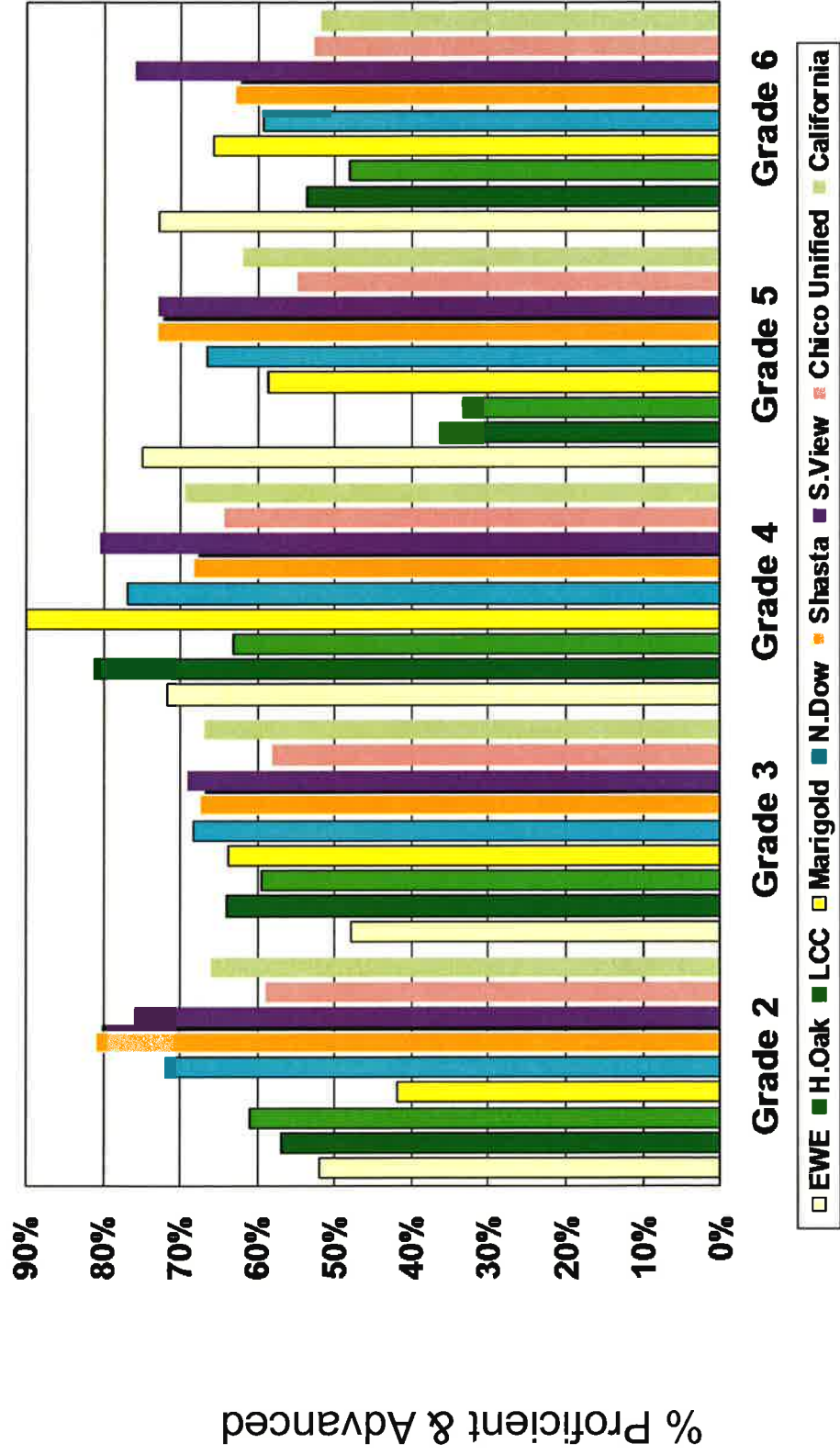


ELA 10-11 CUSD Elementary Schools vs. District & State by

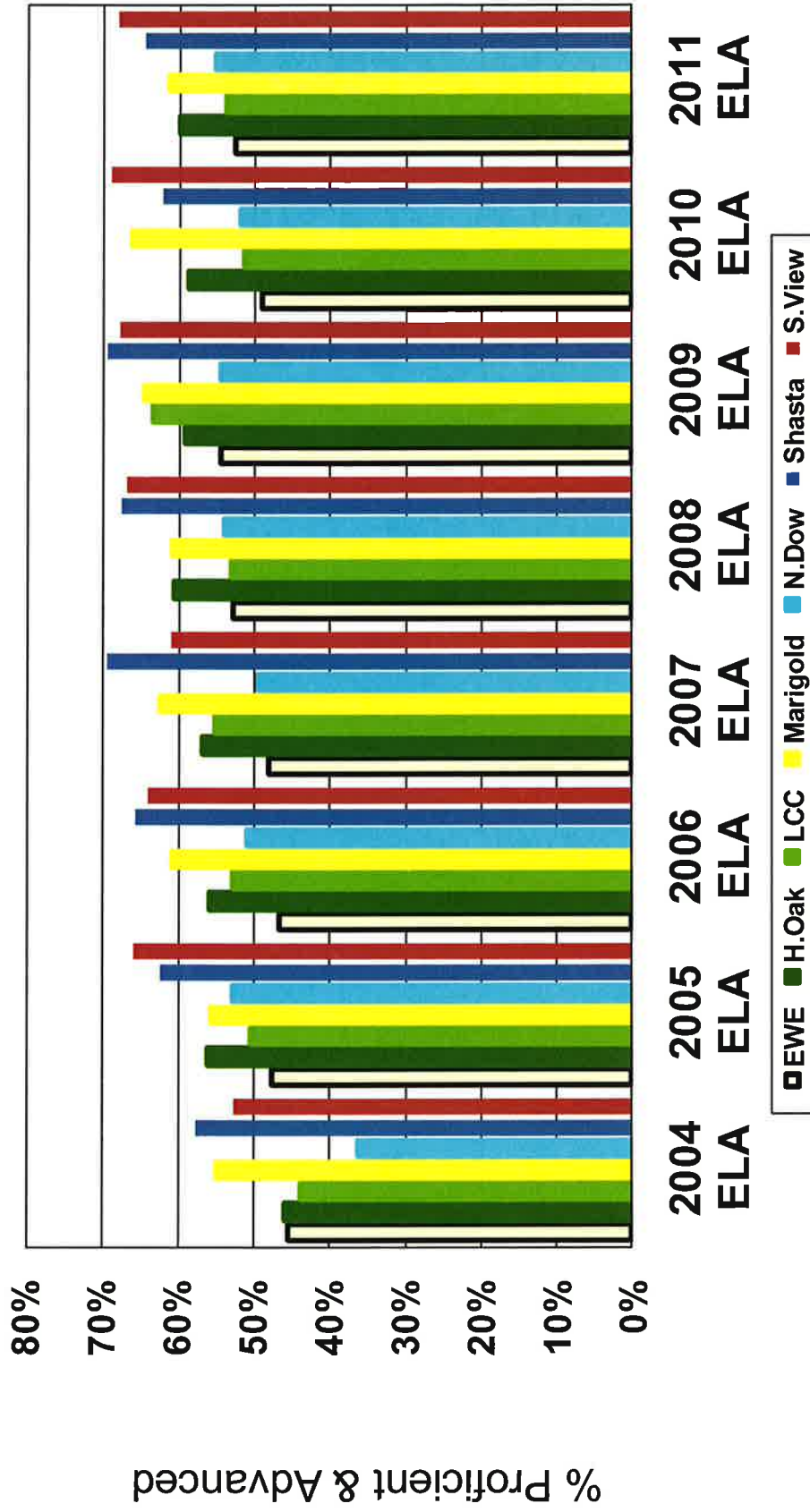
Grade Level



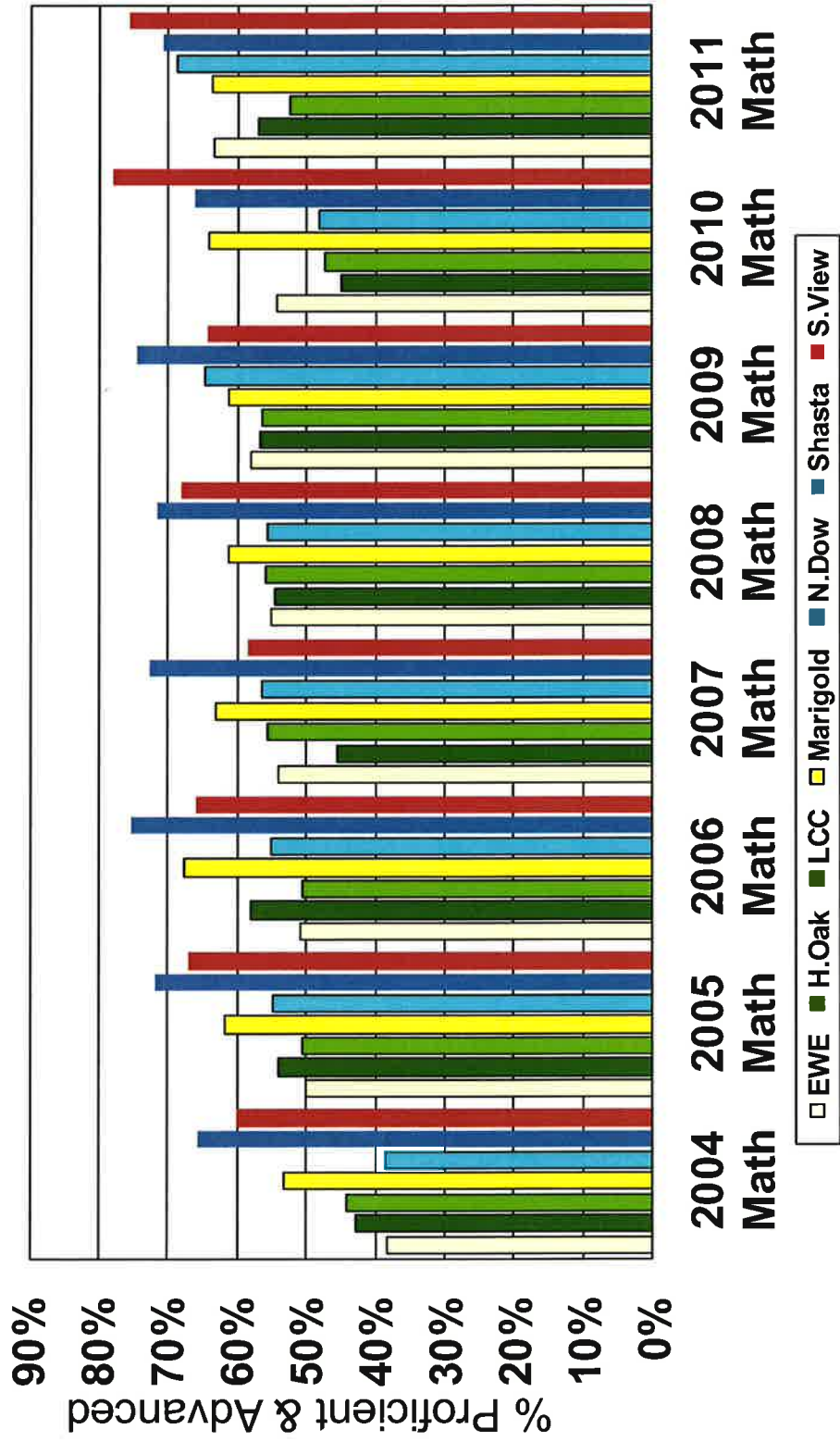
Math 10-11 CUSD Elementary Schools vs. District & State by Grade Level



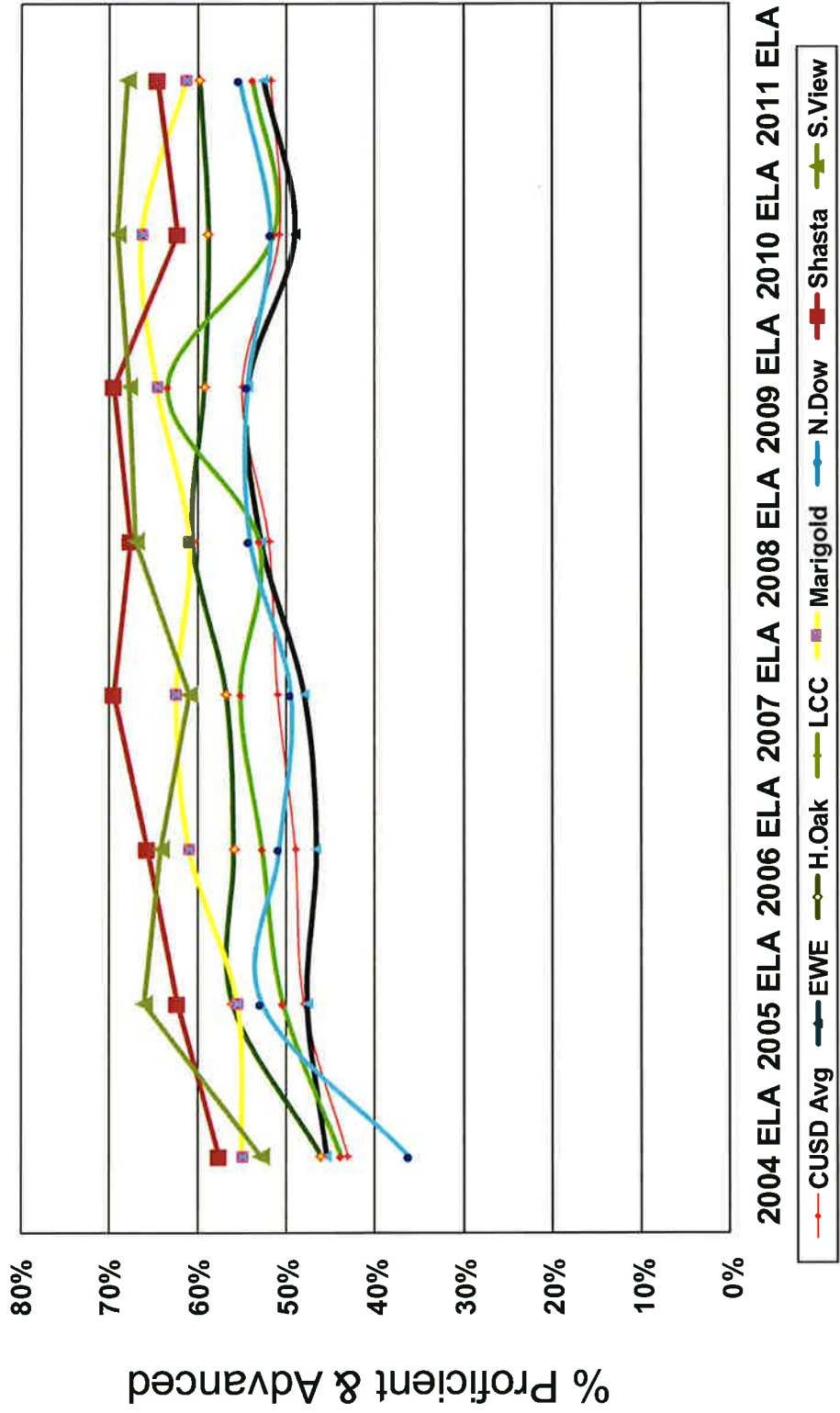
ELA 2004-2011 CUSD Elementary Schools



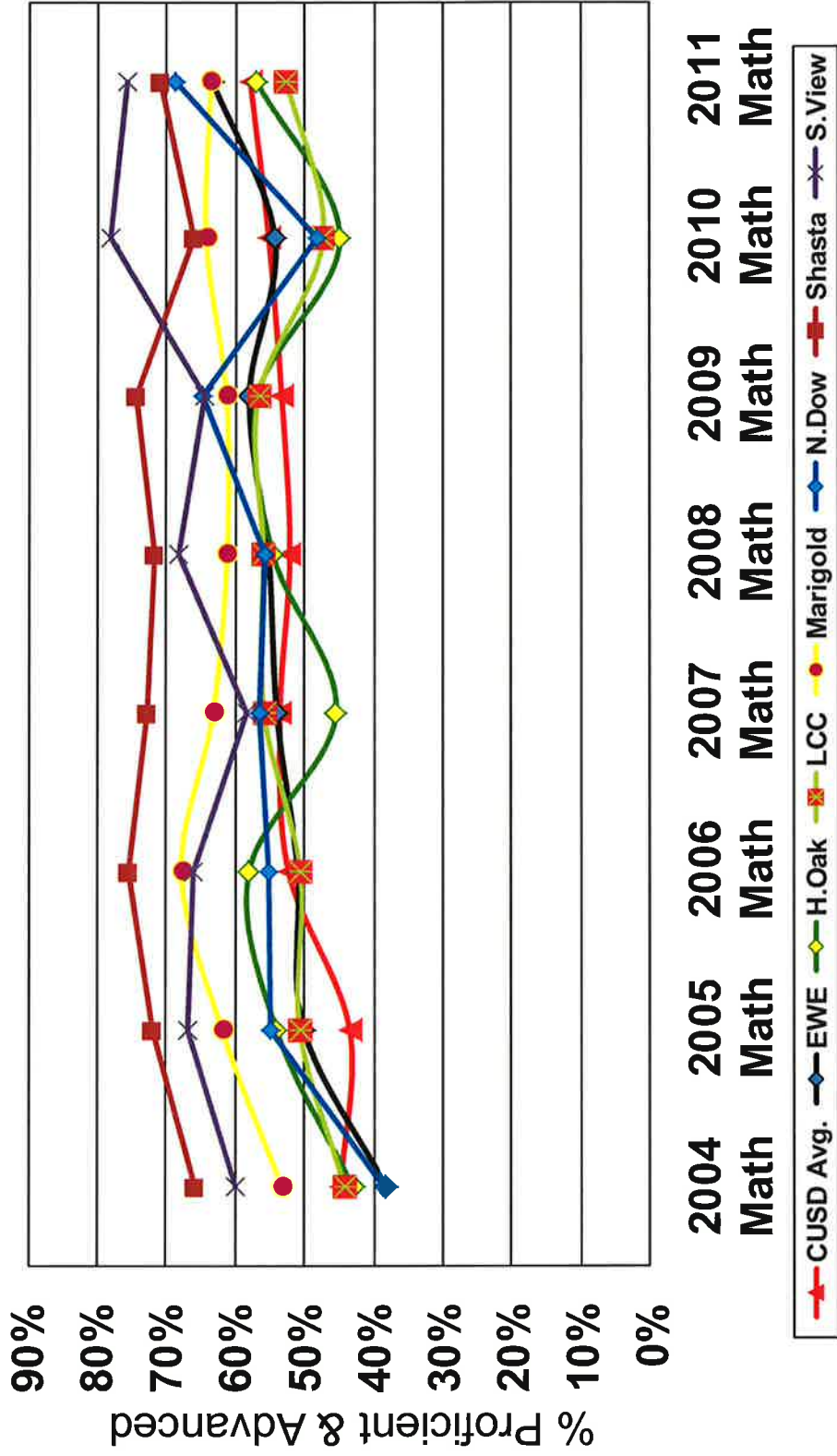
Math 2004-2011 CUSD Elementary Schools



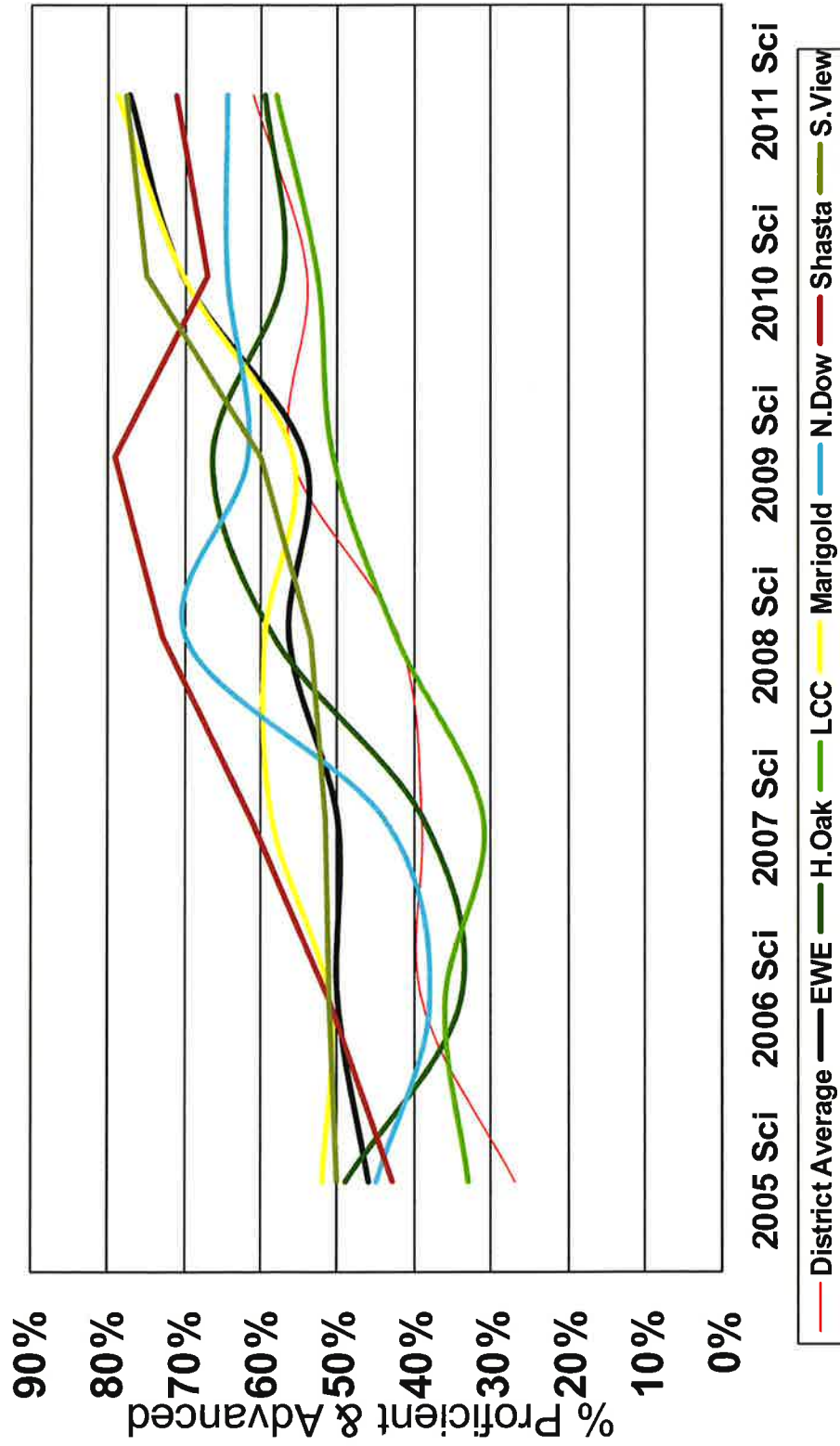
ELA 2004-2011 CUSD Elementary Schools



Math 2004-2011 CUSD Elementary Schools

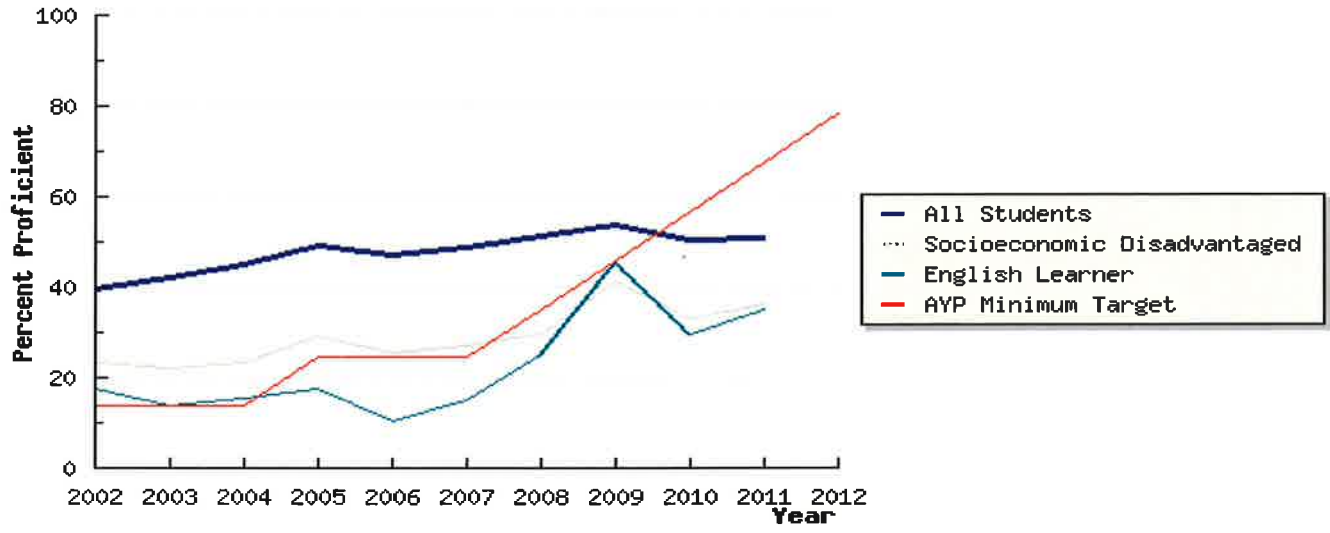


Science 2005-2011 Elementary Schools Gr. 5

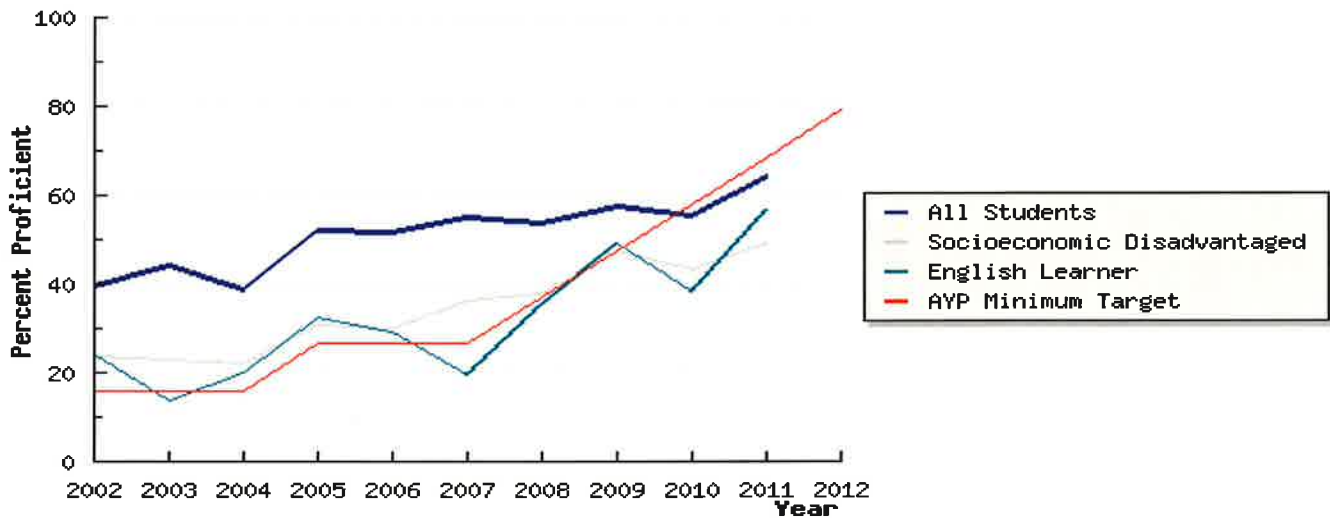


Emma Wilson – Subgroups at or above proficient

ELA

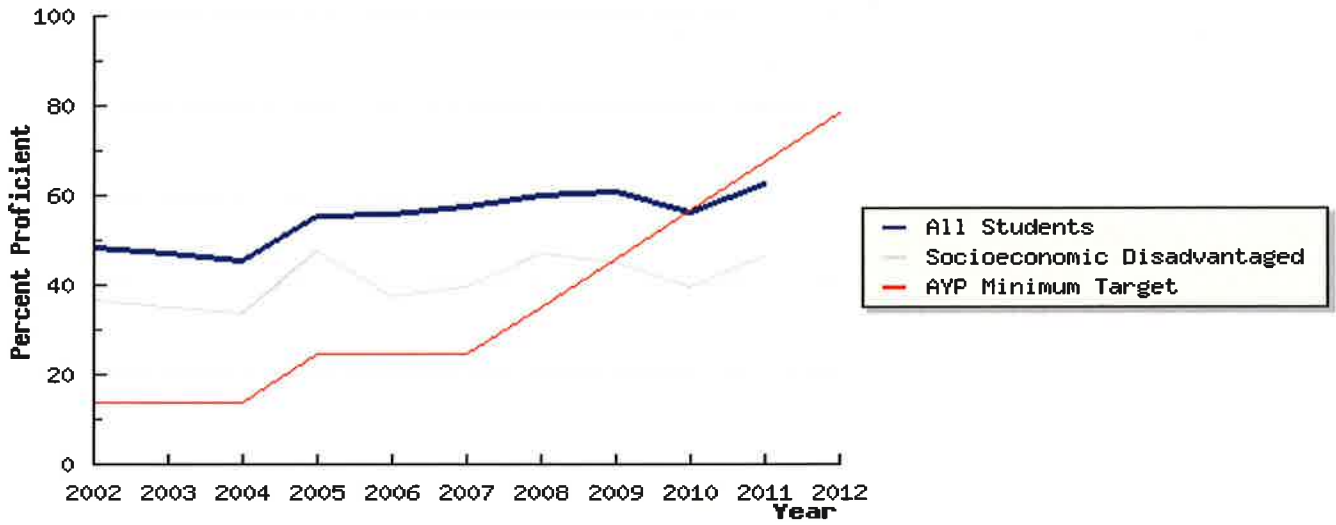


Math

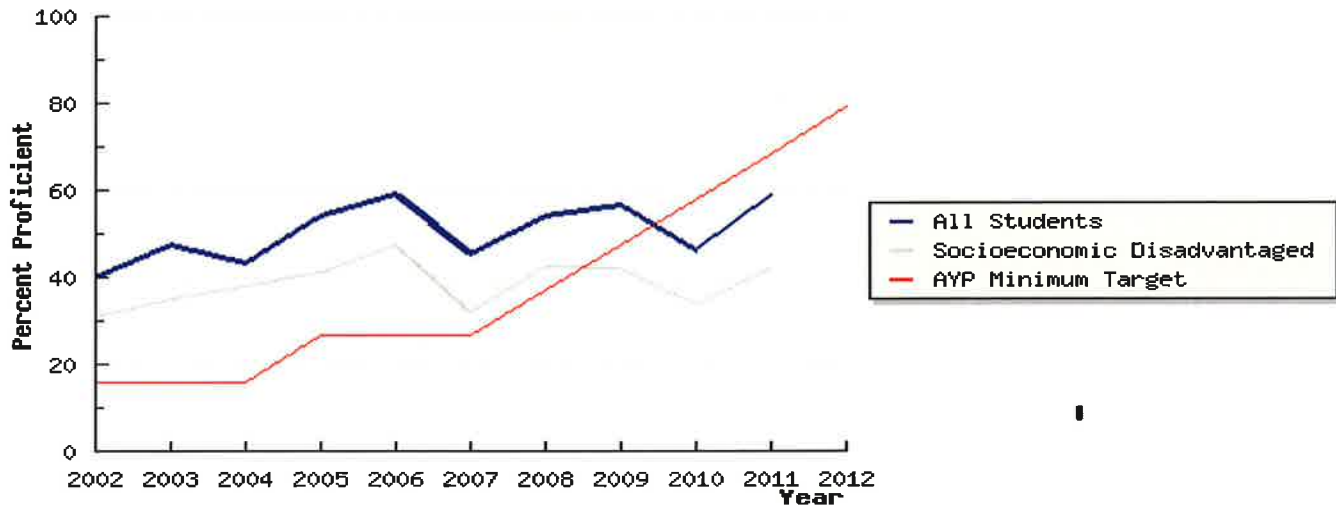


Hooker Oak – Subgroups at or above proficient

ELA

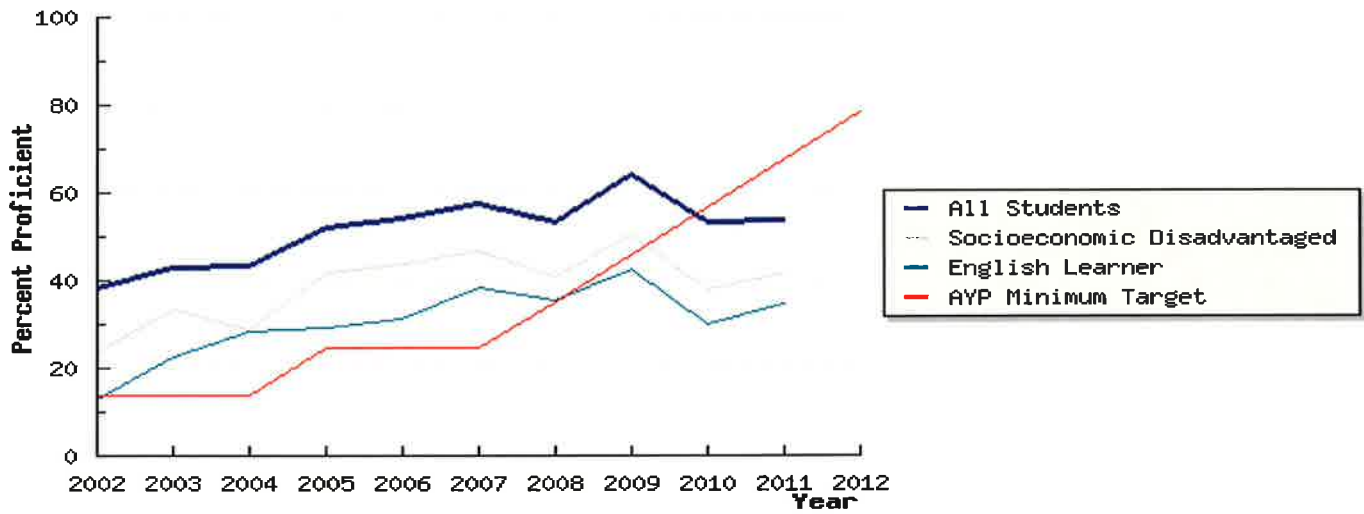


Math

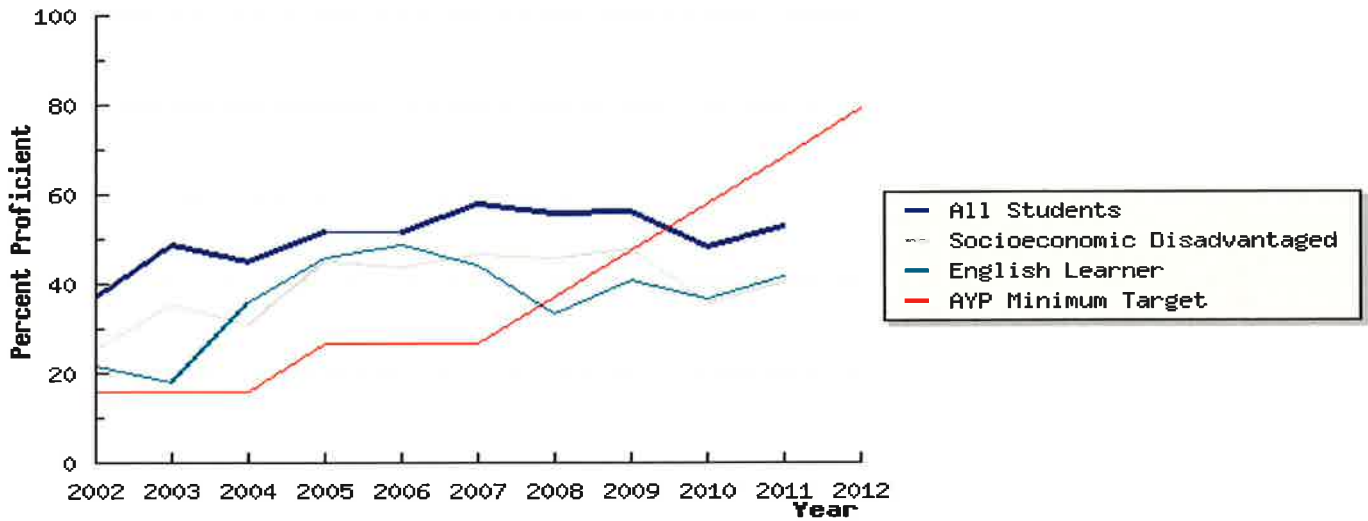


Little Chico Creek – Subgroups at or above proficient

ELA

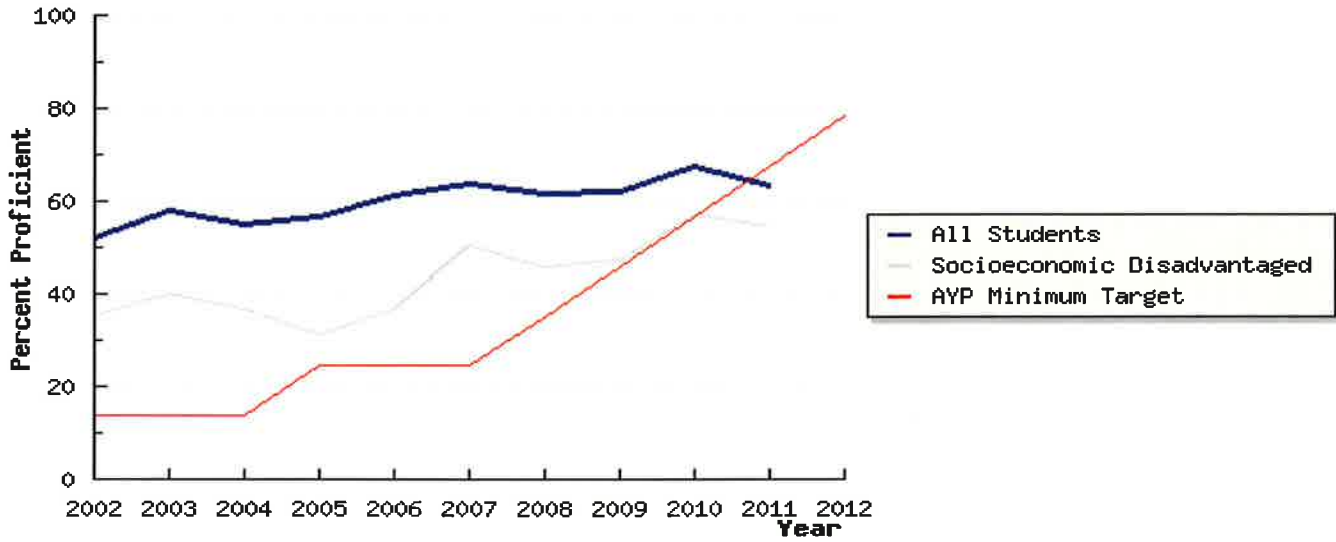


Math

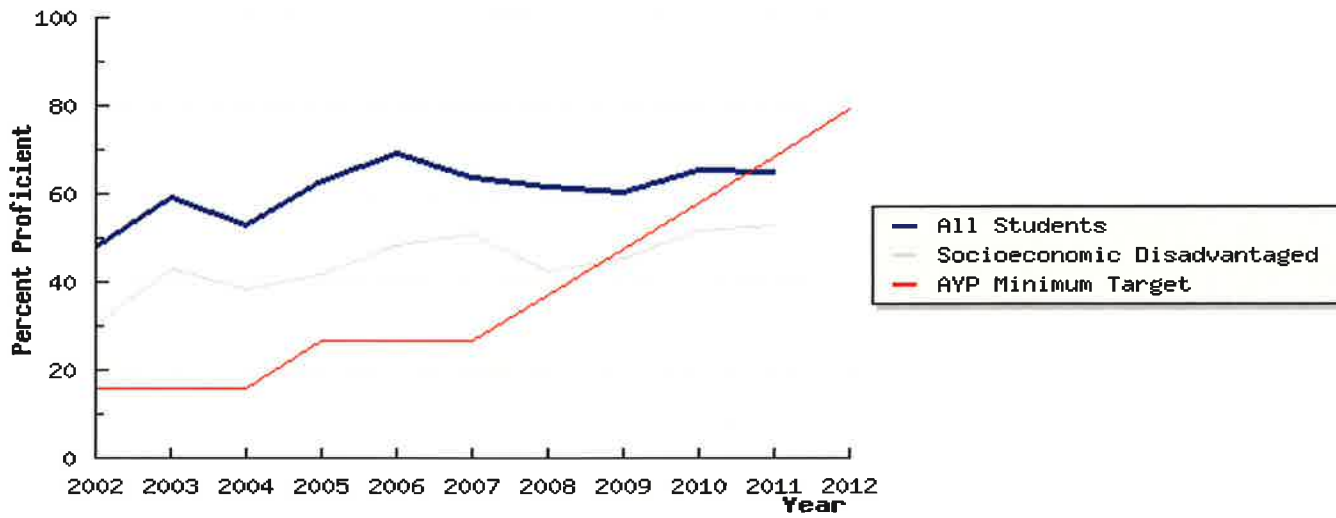


Marigold – Subgroups at or above proficient

ELA

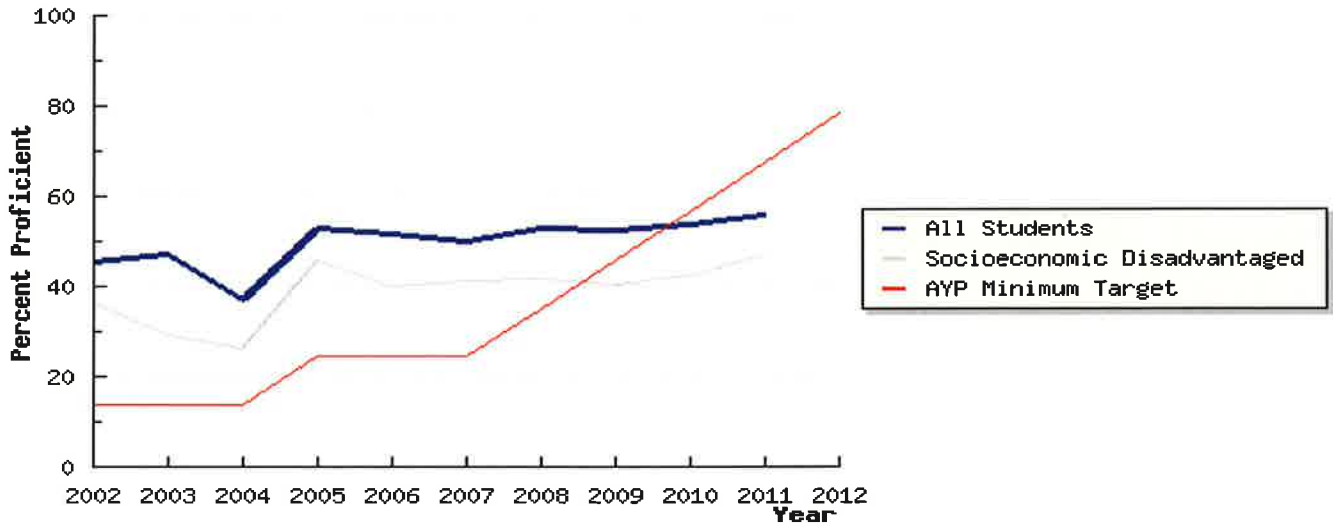


Math

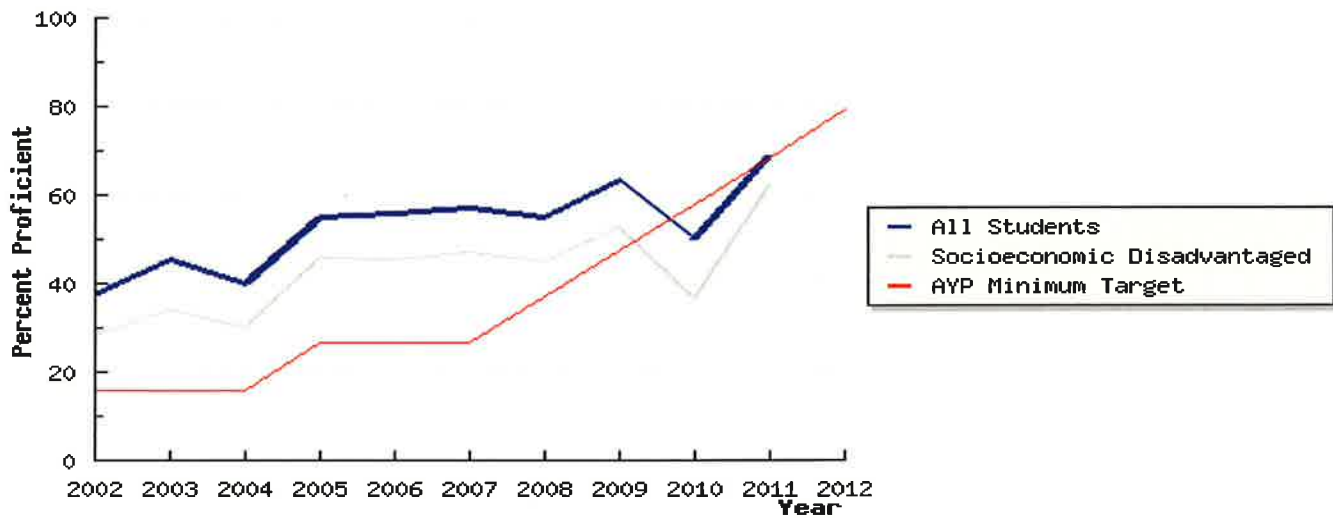


Neal Dow – Subgroups at or above proficient

ELA

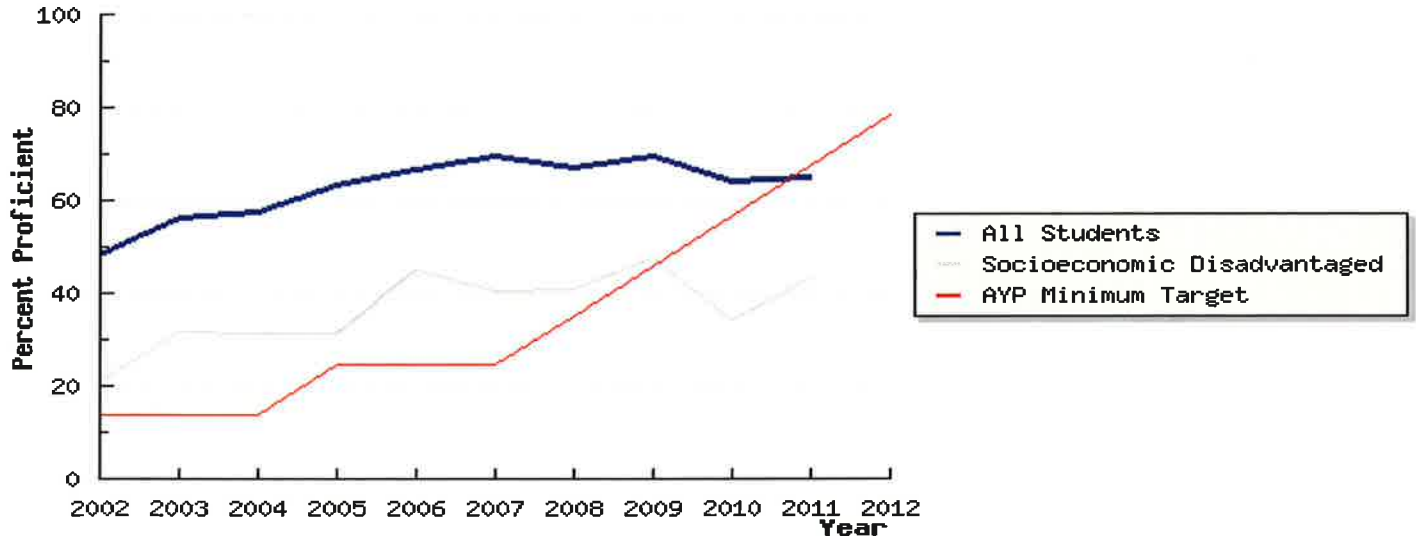


Math

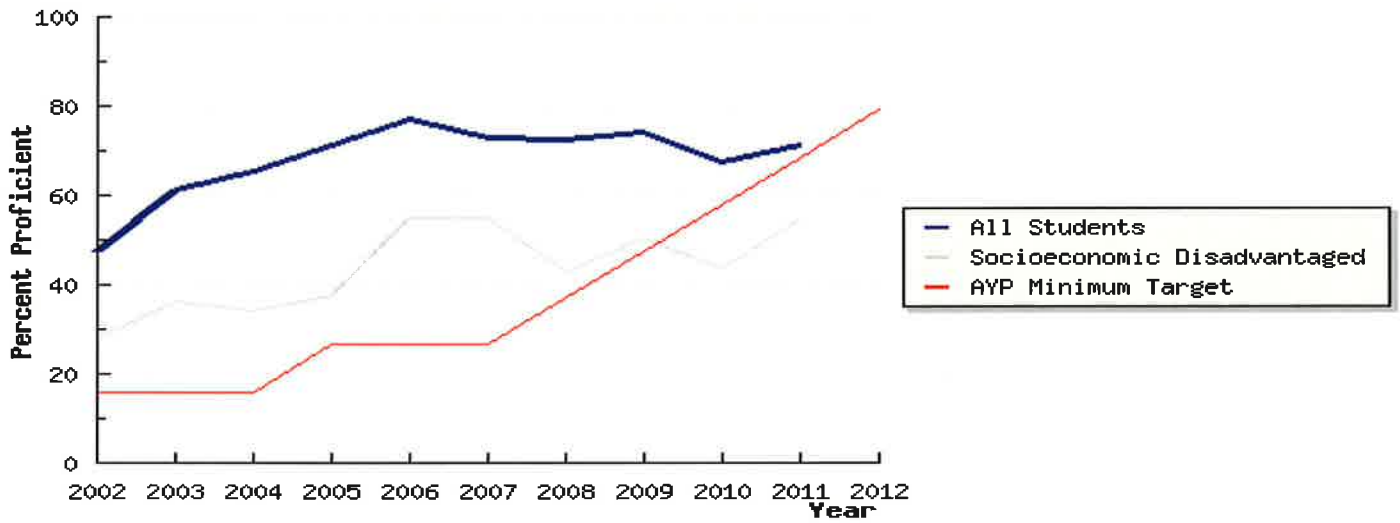


Shasta – Subgroups at or above proficient

ELA

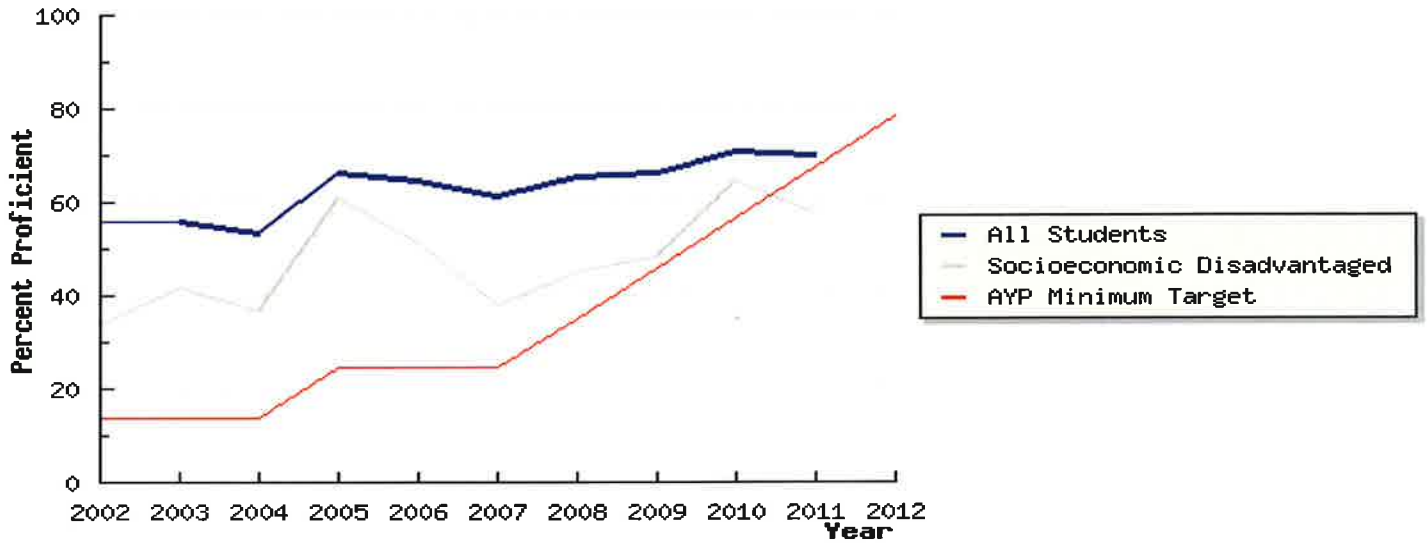


Math



Sierra View – Subgroups at or above proficient

ELA



Math

